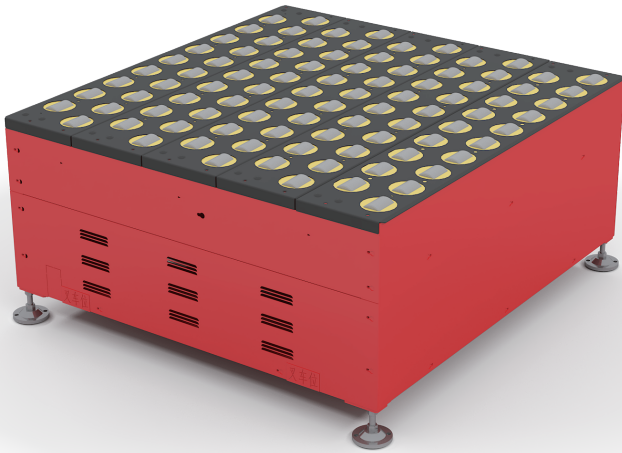


WHEEL SORTER



EFFECTIVE

The electric drum unit adopts polyurethane adhesive, quick sorting, package is not easy to damage.



MODULAR

Easy assembly, strong interchangeability, especially electric drum unit, easy to plug and replace.



STAGGERED

Smaller Spaces between units in a limited space allow for sorting of smaller packages.

Model	Size (mm)	Load Capacity (kg)	Speed (m/s)	Sorting Efficiency (PPH)	Parcel Size Range (mm)
3K	B1060*L1060*H600-800	60	1.5	3000	150*150*10~1000*800*800
3.6K	B1060*L1060*H600-800		1.5	3600	150*150*10~1000*800*800
4K	B1060*L1200/1130/1000*H600-800		1.5	4000	150*150*10~1000*800*800
	B1260*L1200*H600-800		1.5	4000	150*150*10~1000*800*800
6K	B860*L900*H600-800		2	6000	150*150*10~800*700**700
	B1060*L1130*H600-800		2	6000	150*150*10~1000*800*800
	B1260*L1200*H600-800	2	6000	150*150*10~1000*800*800	
6K smalls and flyers rejection wheel sorter	B860*L1130*H600-800	15	2	6000	70*70*10~1000*700*700
10K	B920*L2730*H600-800	8	2	10000	120*120*1~465*380*250

APPLICATION SCENARIO

Wheel sorter is driven by electric drum and driven by servo motor. It consists of an independent electric drum module and a plurality of servo motor steering modules.

It can realize the sorting of all categories and specifications of goods. The modular design and assembly can be applied to different application sites of large and medium size. It has outstanding sorting advantages in the complex packaging types of sorting goods and the sites of large and heavy goods.

PARAMETER

Height: 600-800mm (Customizable)

Load Capacity: 8、15、20、60、75 (kg)

Angle: -45°~45°; -55°~55° (Partially realizable)

Main Line Speed: 1.5m/s (Adjustable Range 0.6-2.5m/s)

Electric Drum Specification: D65*66; D55*53; D70*85(mm)

Power: 2580W~11600W

Sorting Efficiency: 3000、3600、4000、6000、10000 (pc/hour)



SAFETY

It is equipped with an emergency stop button, reserve external safety loop interface, control loop is not affected by the emergency stop button.



SERVICE

We provide you the comprehensive after-sales service, and our professional technical engineer will serve you to answer every question whenever you have during the application process.



CHINA POST TECHNOLOGY CO., LTD.

COMPANY HQ : No.3185, Zhongshan North Road, Putuo District, Shanghai

BEIJING BRANCH : No.65, Jiancaicheng West Road, Haidian District, Beijing

SIWUN SUBSIDIARY : No.399, Yuangang Road, Tianhe District, Guangzhou

E'ZHOU BRANCH : Yangye Town, Airport Economic Zone, Ezhou

China Post Siwun R&D and Intelligent Manufacturing Nasha Base:

No.8, Zhixin 3rd Road, Nansha District, Guangzhou, Guangdong



 www.cpte.com/en

 info@siwun.cn

 + 86 177 0191 0486