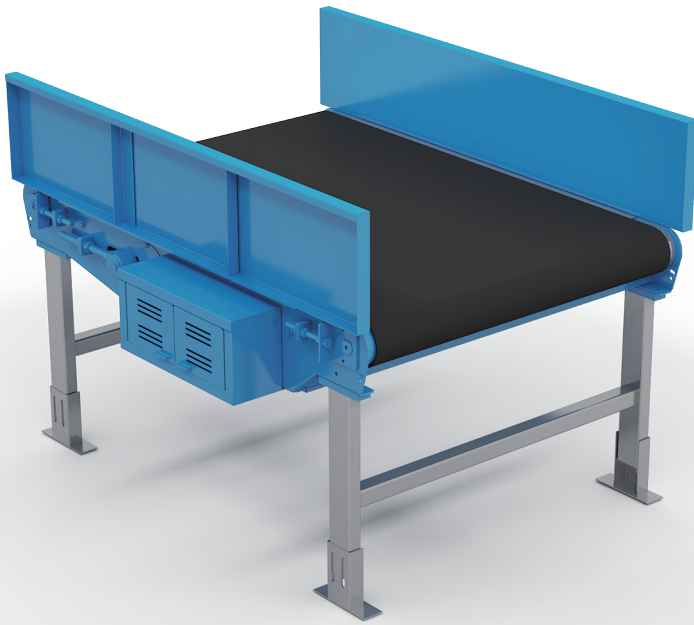


BELT CONVEYOR



MODULAR DESIGN

Simple structure, easy to transport, assembly, site construction, etc.



STANDARDIZED PARTS

Most of the key parts are interchangeable and easy to maintain.



PRODUCT USAGE

Linear conveying: It can be used for horizontal conveying, inclined conveying, horizontal and oblique mixed conveying, and single flow, loose flow package delivery. The width and length can be adjusted in the prescribed range.

Conveyor length (mm) Belt width (mm)	1000-2000	1500-3000	2000-4000	3000-6000	4000-12000	6000-18000	Speed (m/min)
800		Parameterized all-in-one conveyor		Nose drive		Single drive	36-90
1000							
1200							
1400							
800	High speed all-in-one conveyor or High speed nose drive all in one conveyor		High speed nose drive		High speed single drive		90-150
1000							
1200							
1400							

APPLICATION SCENARIO

Applicable to e-commerce, express, warehousing and other types of single flow, loose flow package delivery.

Adaptive environment

- ① Temperature: -20℃~+40℃
- ② Humidity: 10%-90% (No condensation in the room)
- ③ Altitude: ≤1000m (Can be adjusted for special circumstances)

PARAMETER

Length:1000mm-18000mm

Power:0.75KW-4KW

Speed:

Low 30m/min-60m/min

Medium 60m/min-90m/min

High 90m/min-150m/min



SAFETY

The exposed roller and driving device are equipped with baffles, which to avoid injury to staff during operation.



SERVICE

We provide you the comprehensive after-sales service, and our professional technical engineer will serve you to answer every question whenever you have during the application process.



CHINA POST TECHNOLOGY CO., LTD.

COMPANY HQ : No.3185, Zhongshan North Road, Putuo District, Shanghai
BEIJING BRANCH : No.65, Jiancaicheng West Road, Haidian District, Beijing
SIWUN SUBSIDIARY : No.399, Yuangang Road, Tianhe District, Guangzhou
E'ZHOU BRANCH : Yangye Town, Airport Economic Zone, Ezhou
China Post Siwun R&D and Intelligent Manufacturing Nasha Base:
No.8, Zhixin 3rd Road, Nansha District, Guangzhou, Guangdong

 www.cpte.com/en

 info@siwun.cn

 + 86 177 0191 0486

